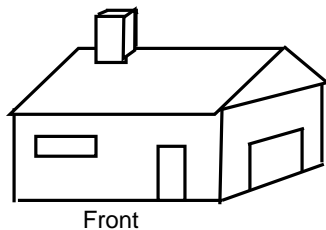
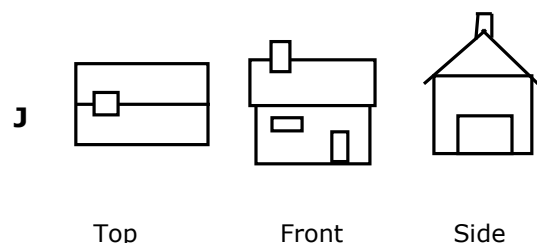
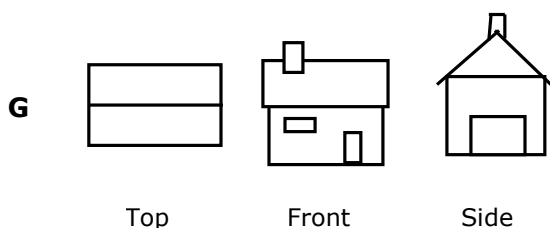
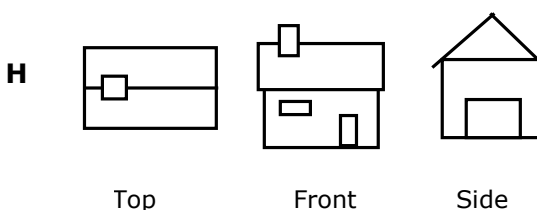
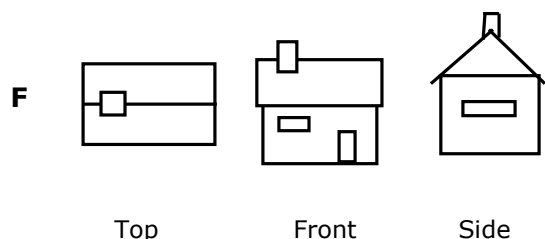


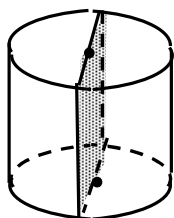
42. A drawing of a house is shown below.



Which of the following shows the orthographic views of the house?



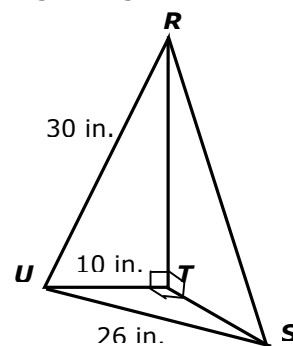
43. A plane intersects a cylinder through the center of the bases and perpendicular to the bases.



The intersection is shown as the shaded area above. Which of the following best describes the intersection?

- A** A circle
- B** A non-rectangular parallelogram
- C** A square
- D** A rectangle

44. The figure below shows three right triangles joined at T , the right angle vertex of each.



Which of the following is closest to the length of \overline{RS} ?

- F** 32 inches
- G** 24 inches
- H** 37 inches
- J** 28 inches